



ART on Ice

Showcase Skating Competition
with Compete USA

Sunday October 15, 2017

hosted by Cool Sports Skating Academy

Registration form deadline: Saturday September 30, 2017

ELIGIBILITY TO COMPETE

The competition is open to ALL skaters who are current eligible (ER 1.00) members of either the Learn to Skate USA program and those who are full members of U.S. Figure Skating. To be eligible, skaters must have submitted a membership application or be a member in good standing. Members of other organizations are eligible to compete but must be registered with Learn to Skate USA or a member club. There will be no more than six competitors maximum in an event.

Eligibility and Test Requirements:

Eligibility will be based on skill level as of closing date of entries. All **Snowplow Sam and Basic Skills 1-6 and Adult 1-6** skaters must skate at highest level passed or one level higher and NO official U.S. Figure Skating tests may have been passed, including Moves in the Field or individual dances.

For the **Pre-free skate, free skate 1-6, levels**, eligibility will be based only upon highest free skate test level passed (Moves in the Field test level will not determine skater's competitive level). Skaters may skate at highest level passed OR one level higher, but not both levels in the same event during the same competition. Skaters may not compete at more than one level in the same type event at the same competition.

APPLICABLE RULES

The event is approved and shall be conducted under Rules 1040, 1070 and U.S. Figure Skating Guidelines of the current U.S. Figure Skating Rulebook, as a Special Competition. The competition will follow the same level requirements for a Compete USA Competition; Snowplow—Basic 6; Adult 1-6; PreFreeskate; Freeskate 1– 6; Adult Pre Bronze & Adult Bronze.

EVENT FEES

PreFreeskate—Preliminary / Adult PreBronze & Bronze events:	\$40 First Event \$15 Each Additional Event
Snowplow—Basic 6 events / Adult 1-6:	\$25 First Event \$10 Each additional
Team Events (Duets, Compulsory, Mini, Ensemble):	\$20 per person



JUDGING

1. The 6.0 judging system will be used at ART on Ice for all artistic & traditional programs.
2. Officials will be chosen from U.S. Figure skating coaches, judges or eligible U.S. Figure Skating members
3. The judging panel for each event will consist of 3 judges and 1 chief referee. Trial judges may be added.

Showcase Events: Performances will be judged from an entertainment standpoint, for theatrical and artistic qualities. The 6.0 judging system will be used. One mark will be awarded by each judge for each performance. **No technical skating mark will be awarded.**

Technical skating skills and difficulty will not be rewarded as such; however, skating must be the major element of the performance and be of sufficient quality to support the selected theatrical elements.

Unintended falls, poorly executed skating elements and obvious losses of control will negatively affect the competitor's/team's marks.

Jump difficulty is not rewarded in showcase; therefore jumps, if choreographed, should be performed with style, flow and confidence.

Theatrical elements evaluated will include are but not limited to: Reflection of the musicality as it pertains to the concept of the program, Projection, Energy, Timing, Acting, Skating skills that relate to the music, Use of props and scenery, Interaction (Duets and Ensembles only)

Deductions will apply for negligence relating to: costumes, props, program times.

EVENTS OFFERED

- Dramatic, Light Entertainment & Duet Showcase Events
- Mini Production (3-7 skaters)
- Group Production (8-30 skaters)

AWARDS

Awards will be scheduled throughout the event. Medals will be given for 1st, 2nd & 3rd placements and ribbons given for 4th, 5th & 6th placements. Awards will take place either in the lobby of Cool Sports or on the ice at the conclusion of the competition. Categories will be divided by age & ability with no more than 6 in each group. Running order & final placements will be posted inside the lobby of Cool Sports.

MUSIC

CDs are the only acceptable music format. CDs may have only one (1) track per CD. Music must be submitted at time of check-in (the day of the event) and should be clearly labeled with skater's name, rink / club, and skating level.

LIGHTING

Full rink lighting will be used for all ART on Ice events.

PHOTOGRAPHERS & VIDEO SPECIALISTS

Professional photographers & video specialists will be on site to record all competition events. Guests may purchase photos or DVDs during & after the competition. Flash photography & unauthorized videoing is NOT ALLOWED.

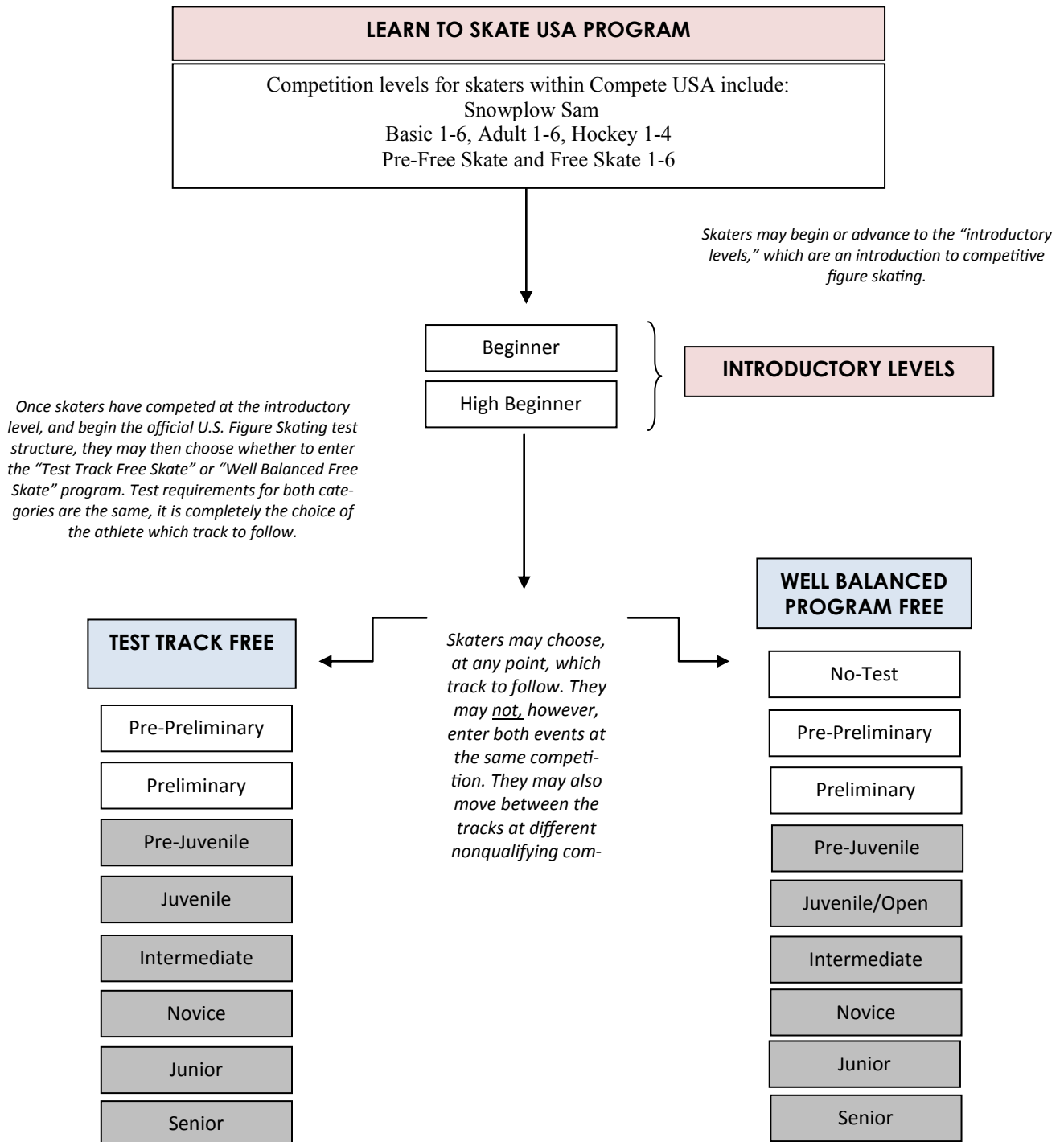
PAYMENTS

Registration for ART on Ice can be completed **www.EntryEeze.com**. Registration & payments are due by Saturday September 30, 2017. Late registrations will incur a \$25 late fee and will only be accepted at the discretion of the Competition Chair. **All payments are non-refundable after September 30, 2017.** **Paper entries are not accepted.**

LEARN TO SKATE USA

ILLUSTRATION OF THE PROGRESSION THROUGH THE LEVELS OF U.S FIGURE SKATING

Singles athletes begin with the Learn to Skate USA program, then progress to the “introductory levels,” and finally choose whether to follow the test track or Well Balanced program category. Athletes may choose to move between test track and Well Balanced program at any point.



SHOWCASE EVENTS

Showcase events are open to skaters in Basic, Free Skate, Limited Beginner through Preliminary and Adult Bronze. Groups will be divided by number of entries and ages if possible. Skaters must enter at the same level as their free skate event or highest test level of skater's in the group ensemble or production number. If a free skate event is not being entered, skaters must enter at their current test level or one level higher. Vocal music is permitted.

Show costumes are permitted, as long as they do not touch or drag on the ice. Props and scenery must be placed and removed by unaided singles and duet competitors within one minute and by unaided ensemble contestants within two minutes for setup and two minutes for removal. A 0.2 deduction will be assessed by the referee against each judge's mark for each five seconds in excess of the time allowed for the performance, for handling props and scenery and for scenery assistance.

Performances will be judged from an entertainment standpoint, for theatrical qualities. Technical skating skills and difficulty will not be rewarded as such; however, skating must be the major element of the performance and be of sufficient quality to support the selected theatrical elements. Unintended falls, poorly executed skating elements and obvious losses of control will reduce contestant's marks. Jump difficulty is not rewarded in showcase; therefore jumps, if choreographed, should be performed with style, flow and confidence. Theatrical elements evaluated will include energy, poise, acting, pantomime, eye contact, choreography, form/extension and the use of props and ice.

6.0 Judging will be used. Deductions will be made for skaters including technical elements not permitted in the event description.

* For specific guidelines regarding the conduct of Showcase competitions, refer to the Non-qualifying Showcase Guidelines posted on www.usfigureskating.org.

Showcase categories include:

Levels will be subdivided, if necessary, depending on entry numbers and event set up

Dramatic entertainment: Showcase program utilizing intense emotional skating quality to depict choreographic theme.

Light entertainment: Showcase program emphasizing such choreographic expressive qualities such as comedy, love and mime while incorporating skating skills.

Duets: Theatrical/artistic performances by any competitors.

LEVEL	ELEMENTS	QUALIFICATIONS	PROGRAM LENGTH
Basic 1-6	Elements only from Basic 1-6 curriculum	May not have passed any higher than Basic 6 level.	Time: 1:00 max.
Pre-Free Skate-Free Skate 6/ Beginner/High Beginner/ Adult 1-6	3 jump maximum. ½ rotation jumps only, plus the following full rotation jumps: Salchow and toe loop.	May not have passed any official U.S. Figure Skating free skate tests.	Time: 1:30 max.
No Test/ Pre-Preliminary/ Adult Pre-Bronze	3 jump maximum. No Axels or double jumps permitted.	Must have passed no higher than U.S. Figure Skating Pre-Preliminary or Adult pre-Bronze free skate test.	Time: 1:30 max.
Preliminary/ Adult Bronze	3 jump maximum. Axels are permitted, but no double jumps allowed.	Must have passed no higher than U.S. Figure Skating Preliminary free skate or Adult Bronze test.	Time: 1:40 max.

Mini production ensembles: are theatrical performances by three to seven competitors. Props and Scenery ARE permitted. Programs are performed under full arena lighting. Skaters may enter only one duet, one mini production ensemble and one production ensemble each.

Timing: 3:10 MAX

Production ensembles: are theatrical performances by eight or more competitors. NOTE: Skaters may enter only one duet, one mini production ensemble and one production ensemble each. Props and Scenery ARE permitted. Programs are performed under full arena lighting.

Timing: 6:15 MAX

General:

The inclusion of scenery and/or props is not mandatory.

All scenery will be portable and not require any mechanical means for transportation (i.e. forklift, etc.). Its movement will be the responsibility of the skater or teams.

Scenery may not exceed 7'6" in height

For insurance reasons no propulsion devices will be permitted. This includes items such as cannons and trampolines. Apparatuses such as these, which could be used to assist skaters with jumping into the air, are NOT permitted. A 0.2 deduction will be taken.

No projectiles.

All props must be under the control of the skater; for example, remotely controlled images or objects.

The use of smoke, fire, dry ice, liquids, live animals, feathers, bubble machines or any substance that may harm the ice surface and/or skaters is not permitted.

No mirrors or glass of any kind is allowed on the ice.

For ensemble set ups (2:00 max): An announcement will be made after 1 minute has elapsed. Another announcement will be made when 30 seconds are remaining. At the 2-minute mark, an announcement is made that set up time is over. Set-up must be complete and skaters must be in their starting position before the 2-minute announcement is made. A 0.1 deduction will be taken for every 10 seconds over.